

About NavCQ

NavCQ is an advanced system that allows you to monitor every trip your vehicle made, such as the travel route, speed of the vehicle at given time or place, and time of travel at any given location.

The way NavCQ works is by logging in and processing the information obtained from GPS. The logged information is then transferred via RF wireless communication to your computer, and you get to view on your computer at your desired level of detail the comprehensive vehicle route history. It will tell you the roads the vehicle traveled on, and at what speeds and times the vehicle traveled on such roads. It's as if you were in the vehicle at all times whether or not you actually were!

◦ **Table of Contents**

- About NavCQ..... 01
- System Contents 03
- PC Base..... 03
- System Requirements 03
- Warranty..... 04
- License Agreement..... 05

- **Getting Started with the Installation** 06~09

- **Installing the Software** 10~14

- **Starting the NavCQ Program**
 - Copy GDT Map data..... 15
 - Get Registration Code and Register GDT Map..... 16~18
 - Register your vehicles..... 19~20

- **Program User's Guide**
 - The main program button description 21
 - Get the driving record from the vehicle 22~23
 - Get the saved driving from your local hard disk 24
 - Driving Route Simulation 25
 - View / Hide the Driving Record 26~28
 - Control the Map 29
 - Print the map and the driving record 30

- **Installing Guide for Vehicle**
 - System Contents 31
 - System Wiring 32
 - Mounting the Main Unit..... 33
 - Mounting the Transmitter 33
 - Mounting the GPS Antenna 34
 - Install Confirmation 35

- **Troubleshooting** 36

System Contents

● Main Unit



● GPS antenna



● Base antenna



● Wiring harness



● System Installation Manual



PC Base

● S/W including map data (2 CD)



● USB Device



● USB Device cable



● User's Manual



System Requirements

1. CPU: Pentium 1.4 GHz or higher (Recommend 1.9 GHz or higher)
2. Memory: 256 MB or higher (Recommend 512 MB or higher)
3. Hard Disk: 1.4 GB or higher
4. Screen resolution: 1024 x 768 or higher
5. USB Port
6. Windows XP, 2000.

Warranty

This system is warranted to the original purchaser, to be free from defects in material and workmanship. The manufacturer will repair or replace at its option, and free of charge for the first 60 days, any part that proves defective in material or workmanship under normal installation, use, and service, provided the product is returned to the manufacturer freight prepaid. After the first 60 days warranty period there will be a maximum service charge of \$25.00 per calendar year (if required) for repair and/or replacement of any defective parts. A copy of the original purchase receipt must accompany any products returned for warranty service. Warranty is limited to defective parts and / or replacement parts only and excludes any incidental, and consequential damages connected therewith.

WARRANTY OF INSTALLATION LABOR, REMOVAL AND RE-INSTALLATION CHARGES ARE NOT THE RESPONSIBILITY OF THE MANUFACTURER.

License Agreement

NavCQ is protected by copyright law and international treaties. Unauthorized reproduction or distribution of this program, or any portion of it, may result in severe civil and criminal penalties, and will be prosecuted to the maximum extent possible under the law.

Maps are copyrighted, watermarked and cannot be used separately without permission.

Do not use the NavCQ for illegal purposes.

NavCQ is to be used only as vehicle route tracking aids. They must not be used for any purpose requiring precise measurement of direction, distance, location, or topography. It is the user's responsibility to use the product prudently.

 **NOTE:**

- **Customer must install and use one copy of the software including the GDT-US map on A SINGLE COMPUTER. This license of software must not be shared or used concurrently on different computers.**

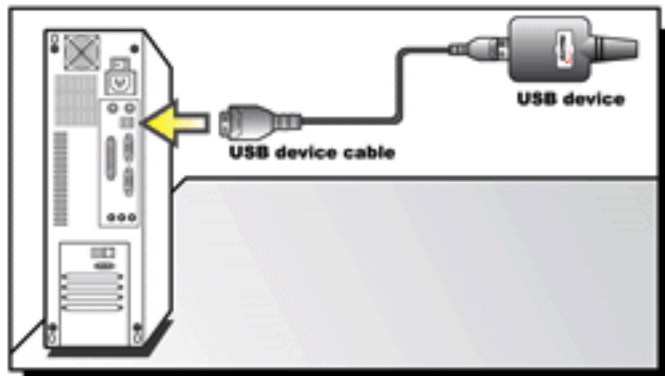
Getting Started with the Installation

- Mounting NavCQ devices in the vehicle (refer to pages 33,34).
- Wiring harness (refer to page 32).
- Installing the USB device driver in the PC.

NOTE: You must install the USB device driver in the PC prior to installing and running the program.

1. Plug the USB device into the PC.

NOTE:
Mount the USB device in an open area
for easy communication with automobiles.



2. Windows will automatically detect the USB device and then initiate the 'Found New Hardware Wizard'



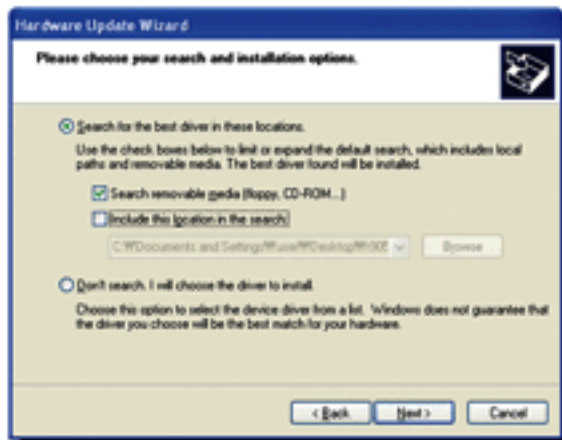
(Windows XP)

NOTE: The installation is based on Windows XP. Others (Windows 2000, etc.) are similar to this procedure.

3. Select search for a suitable driver... , then click **'Next'**

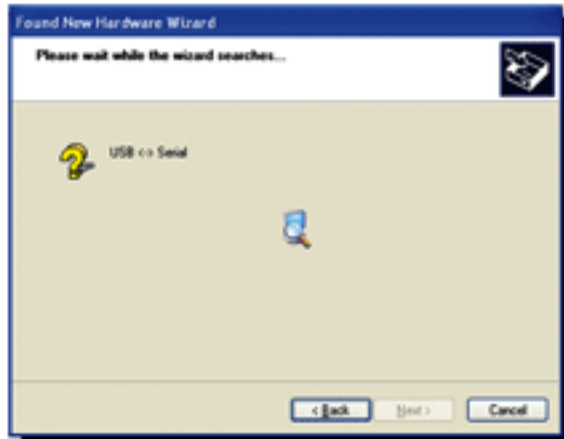


4. Insert Disc One into the CD-ROM drive, then click **'Next'** after you have made sure that only "CD-ROM drive" is checked.



Getting Started with the Installation

5. Windows will now inform you that a driver has been found for the new hardware. Click **'Next'**



6. Click **'Yes'** in the following window.



7. Click **'Finish'** in order to complete the installation of the NavCQ USB device driver.

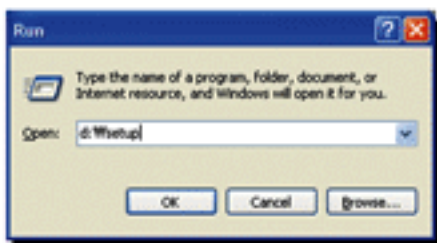


◦ *Installing the Software*

1. Close all open applications. This includes virus scanners and similar applications.
2. Insert Disc One into the appropriate CD-ROM drive.



3. If Auto-Play is active, set up will begin automatically when you close the CD-ROM drive.
If Auto-Play is not active, click Start, then click Run. In the dialog box which appears next, type 'd:\setup', assuming that 'd' is your CD-ROM drive.



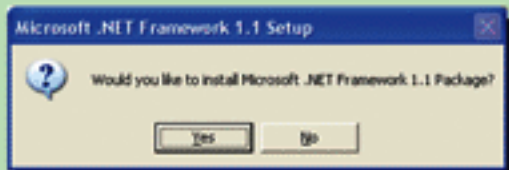
4. Follow the on-screen instructions to complete the setup procedure.



Click **OK**.

NOTE:

- the NavCQ program needs Microsoft.NET Framework.
- The Installation process will ask if you would like to install if Microsoft.Net Framework if your PC does not already have the appropriate version of Microsoft.Net Framework.

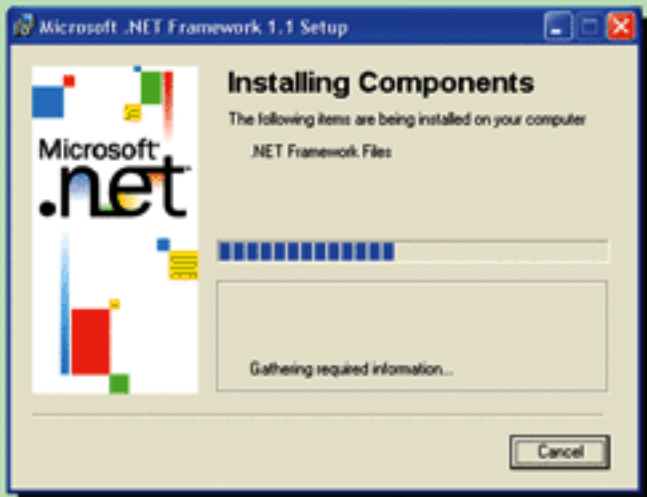


Click **Yes**.

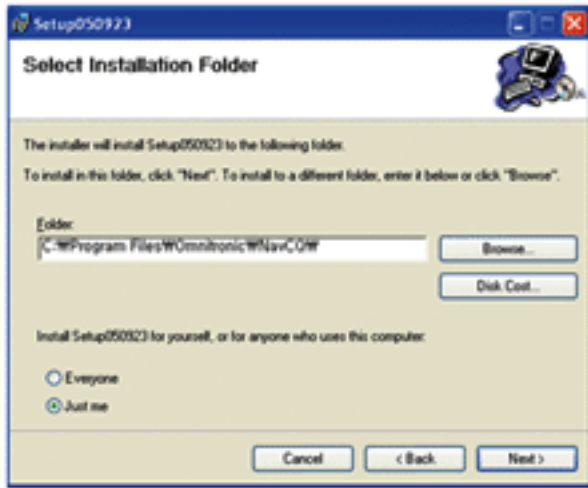
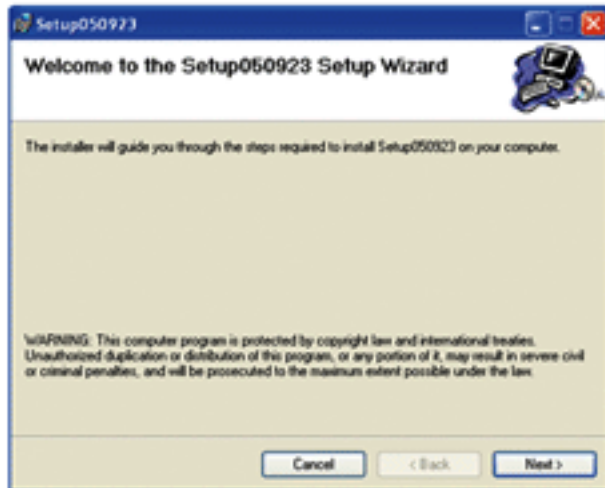


Click on the **I agree** radio button, then click **Install**.

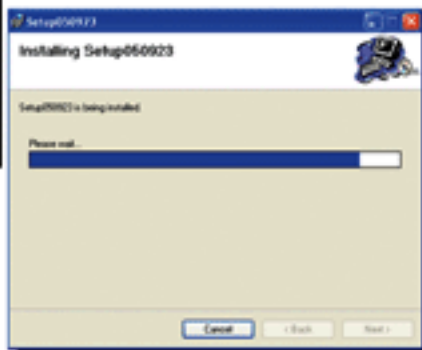
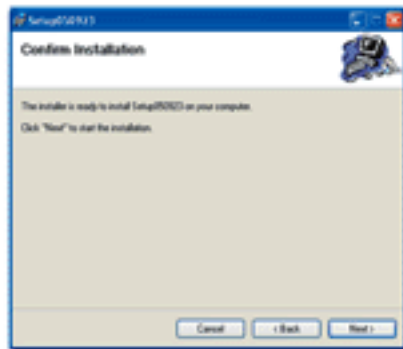
• *Installing the Software*



Click **OK** to proceed to the next step.



• *Installing the Software*



- Double-click the NavCQ Launcher located on your desktop.

Copy GDT Map data

- You need to copy 'GDT Map data' from Disc One and Disc Two to your local hard disk.

 **NOTE:** Disc One must be in your CD-ROM drive at this time.



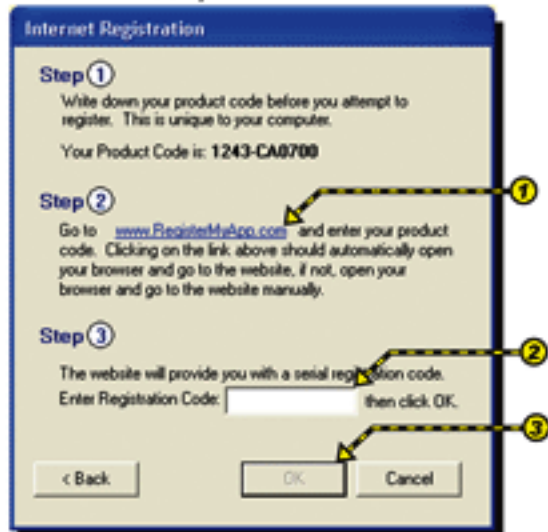
- When you launch the program for the time after the installation, this window will appear.
- Click **1** 'Get Started'. After checking your available hard disk space, click OK to begin to copy 'GDT Map data'.

Get Registration Code and Register GDT Map

- You need to get 'Registration Code' to register GDT Map.
- After copying 'GDT Map data' GDT Map registration window will open.
- Click 'Register Over the Internet' the registration window appear.



- Click **1** 'www.RegisterMyApp.com' on the registration window.
The registration website will automatically open through your web browser.
- Enter your information into this page as requested and click **4** '**Register Now**' then you will get your **5** '**Registration Code**' through the website, then go back to the registration window and type in your **2** '**Registration Code**' exactly as it appears.
- If the registration code is entered properly, the OK button will become active.
- Click **3** '**OK**' to complete the GDT Map registration.
- You can also register by phone during business hours (based on Eastern time).
- If you click "Register Later" you will have only 30 days to use the program until registration is completed, the registration window will appear again whenever you launch the program.
- After the above procedure has been completed the main program will run.



Internet Registration

Step 1
Write down your product code before you attempt to register. This is unique to your computer.
Your Product Code is: **1243-CA0700**

Step 2
Go to www.RegisterMyApp.com and enter your product code. Clicking on the link above should automatically open your browser and go to the website, if not, open your browser and go to the website manually.

Step 3
The website will provide you with a serial registration code.
Enter Registration Code: then click OK.

• Starting the NavCQ Program

RegisterMyApp.com

Registration Information for
Product Code 1243-CA0700

Company Name

Contact Name

Address

Address

City

State

Zip

Country: USA

Phone

Fax

Email

Comments:



RegisterMyApp.com

Thank you for registering your application.

Your original Product Code was: 1243-CA0700

Your Serial Registration code is: 18MDXF3540

Your Transaction number is: 59533

Important! Save these 3 important pieces of information for transferring your registration in the event that you get a new computer or use this software on another machine. Keep these with your original software application.

[Back to Main Page](#)




Register your vehicles

- Click **1 Setting**, then Click **2 Register**. The vehicle registration window will appear.
Click **3 New**, then type in the information.
Enter the vehicle user's name and the USB adaptor's serial number in the respective locations.
Please be sure to enter the serial code exactly as it appears.
Failure to enter the serial code will prevent the program from connecting to the vehicle.
Click **4 Register** to complete registration.

 **NOTE:** The vehicle must be within range of communication with the PC during the registration and must be off. Otherwise the registration will not complete properly.

- Click **New** (if you have another vehicle to register) then follow the same steps above.
- Click **Change** (if you want to modify any information except the serial code), then click Register to complete the change.

 **NOTE:** You cannot modify the serial code. If you want to modify it you must remove this vehicle from the list and re-register the vehicle from the beginning.

- If the registration is completed properly the registered vehicle icons will appear on the main program window

Starting the NavCQ Program



The main program button description



Get the driving record from the vehicle

- Click **1** **Connect to Vehicle**. Icon for registered vehicles within communication range of the PC will become active.

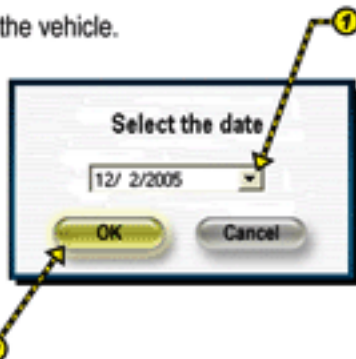
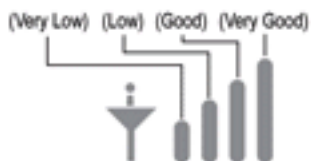


- Click any **2** **active vehicle icon** from which you want to get data. Data selection window will appear.

- ① **Choose** the date, then Click ② **OK** to retrieve the driving record from the vehicle.

NOTE:

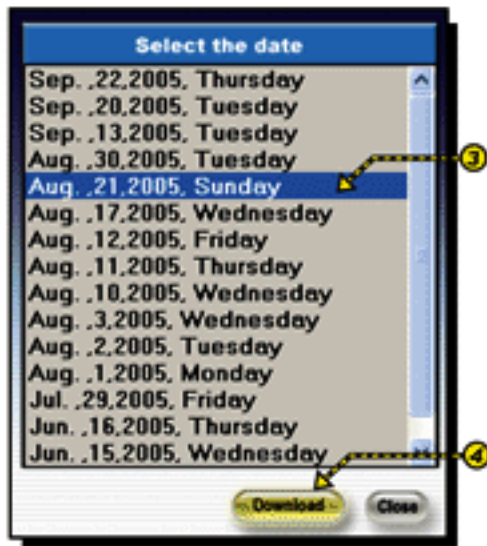
- Data logged in the vehicle device will remain for 90 days.
- You can check the reception strength during communication.
- If connection failure occurs start the program over from the beginning.



- Once you finish downloading all data from the vehicle, appropriate map and information will appear in the main program window and the data will automatically be saved.
- You can also load saved data again at a later time.

Get the saved driving from your local hard disk

- Click **1 Record**, then click **2 any vehicle icon** to load the saved driving record. The date selection window will appear. Select the **3 date** from which to load the driving record, then click **4 Download**.



Driving Route Simulation

- Click **1 Play**. The vehicle icon on the map will start to move following the route traveled by the vehicle.
- You can pause it if you click **2 Pause** and you can stop it if you click **3 Stop**.



View / Hide the Driving Record

- Click **1 Speed**. The color of the driving route will change according to the driving speed.



NOTE: The speed will not be visible while the Time record is showing or while the Driving Route Simulation is running.

- Click **1** Time. The Time record will show on the map. You can increase or decrease the time interval if you click **2** - or **3** +.



- Click **4 Stop-Point**. The Stop-Point record will show on the map.



NOTE: You can see how long a driver stayed at each Stop-Point using this feature.

Control the Map

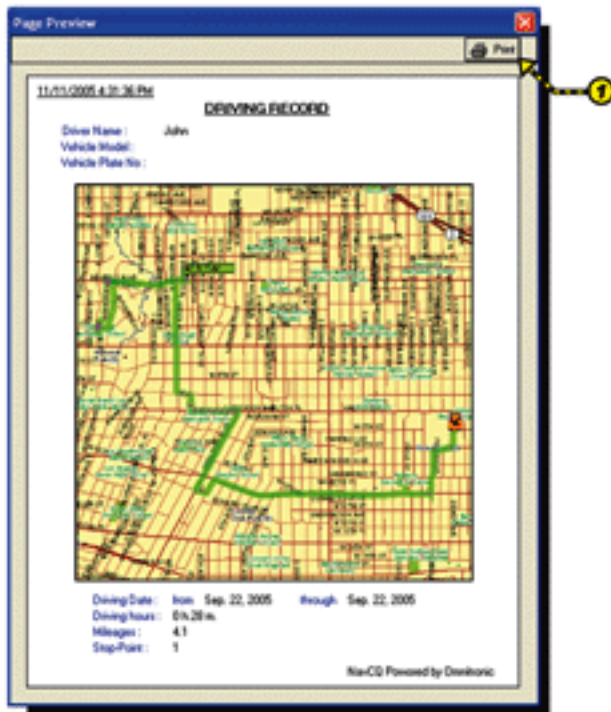
- You can shift the map in any desired direction if you click Arrow (1 North, 2 South, 3 East, 4 West, 5 Northwest, 6 Northeast, 7 Southwest, 8 Southeast)



- If you want to zoom in, Click 9 Zoom +, then Click any spot on the map. To zoom out Click 10 Zoom -, Click 11 Center, then click any spot on the map. The map will move and center on the spot you click on the map. If you want to cancel the task after you click Zoom +, Zoom - or Center, Click 12 Undo. Click 13 Original Scale. The initial map will re-load as initial scale.

Print the map and the driving record

- Click **Setting**, then click **Print**.
- The page preview window will open.
- Click **Printer Setup** to setup the printer.
- Click **Print** to print it out.



System Contents

● **Main Unit**



● **Transmitter**



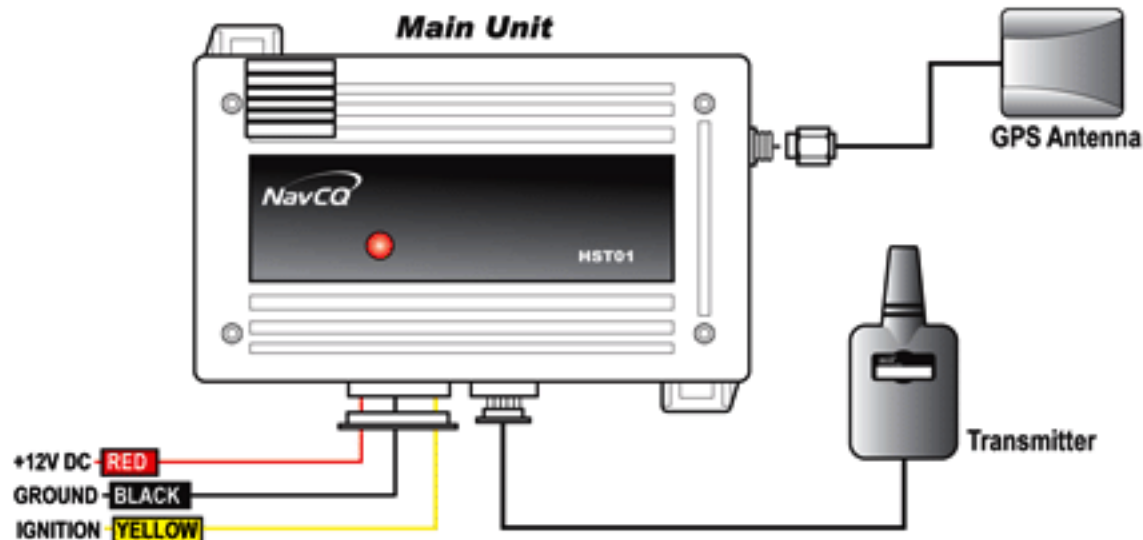
● **GPS Antenna**



● **Wiring Harness**



System Wiring



- RED WIRE:** Module Power Input(+). Connect to constant source of +12V.
- BLACK WIRE:** Ground Input(-). The wire must connect to a solid chassis ground. Clean away any paint or dirt to insure the best possible ground.
- YELLOW WIRE:** +12V Ignition Input. The wire must connect to a main ignition wire at the ignition harness. This wire must supply +12V when the ignition is on and while cranking the starter. The power must not be interrupted while the car is starting.

Mounting the Main Unit

- The Main Unit must only be mounted under the dashboard.



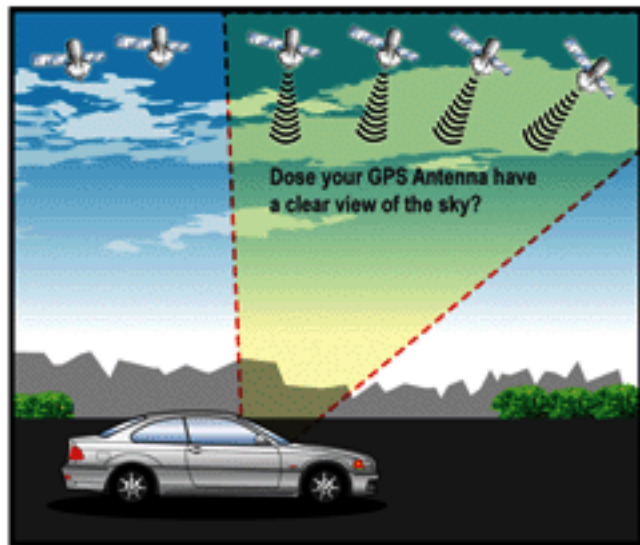
Mounting the Transmitter

- The Transmitter affixes to the windshield with the double sided tape.



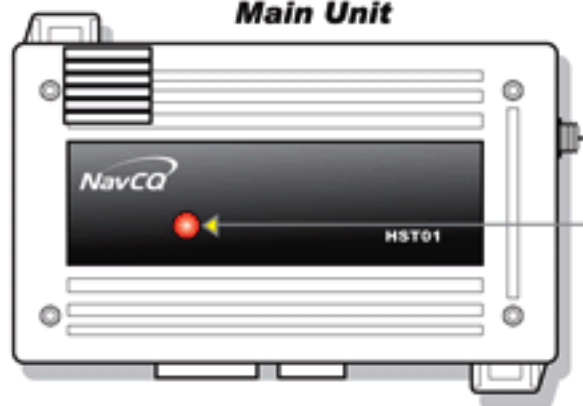
Mounting the GPS Antenna

- The GPS affixes to the dashboard with the double sided tape.



Install Confirmation

Main Unit



- After the installation, turn on the ignition. The **RED LIGHT** will turn on.

RED LIGHT will turn on with vehicle ignition circuit.

• Serial NO:



Refer to this number.

Transmitter



The NavCQ unit should be installed inside the vehicle where it will not interfere with normal and safe operation of the vehicle. **The NavCQ/GPS antenna should be mounted on the vehicle where it has a clear view of the sky, and where it will not interfere with normal and safe operation of the vehicle.** Virtually all GPS devices have inaccurate or incomplete data to some extent due to many factors in the earth's atmosphere and environment such as adverse weather conditions or satellite reception being blocked by mountains or other objects, or there can be computational errors.

It will take 5 to 25 seconds to operate the GPS device after starting your vehicle.

It may take up to 10 minutes to operate the GP device when you start your vehicle for the first time after installation.

The data logged into your NavCQ can be transferred to your computer by RF wireless transmission. **The distance of transmission may be up to 300 feet, provided that there is no obstruction between NavCQ and the computer.** Objects between the vehicle and the computer may interfere with the transmission. Please refer to the website www.navcq.com for more detailed troubleshooting.